



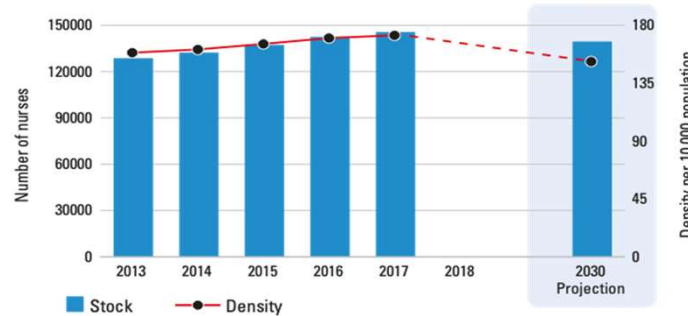
This map is an approximation of actual country borders.

Switzerland

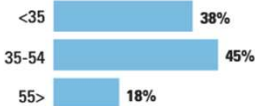
	COUNTRY	WHO REGION
Total population (UN population prospects, 2019)	8591361	930166618
UHC Service Coverage Index (0-100 points, 2017)	83	-
Life expectancy at birth m/f (years, 2016)	81.2/85.2	74.2/80.8
Probability of dying under five (per 1 000 live births, 2018)	4.1	8.6
Probability of dying between 15 and 60 years m/f (per 1 000 population, 2016)	62/36	155/70
Gross domestic product (GDP) (per capita US\$, 2017)	80642	23764
Current health expenditure as a per cent of GDP (2017)	12.4	7.8
Current health expenditure per capita (US\$, 2017)	9956	2387

Source: WHO

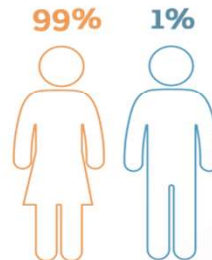
Nursing stock and density 2013-2018



Age distribution



Sex distribution



Nurse mobility

Foreign trained **25.90%**
Foreign born **NR**

Country capacity on:

✓ Yes ✖ Partial ✗ No NR No Response

EDUCATION REGULATION

- Master list of accredited education institutions ✓
- Accreditation mechanisms for education institutions ✓
- Standards for duration and content of education ✓
- Standards for interprofessional education ✓
- Standards for faculty qualifications¹ ✓

PRACTICE REGULATION

- Nursing council/authority for regulation of nursing¹ ✓
- Fitness for practice examination¹ ✗
- Continuing professional development ✓
- Existence of advanced nursing roles ✓

WORKING CONDITIONS

- Regulation on working hours and conditions ✓
- Regulation on minimum wage ✗
- Regulation on social protection ✓
- Measures to prevent attacks on HWs ✓

GOVERNANCE AND LEADERSHIP

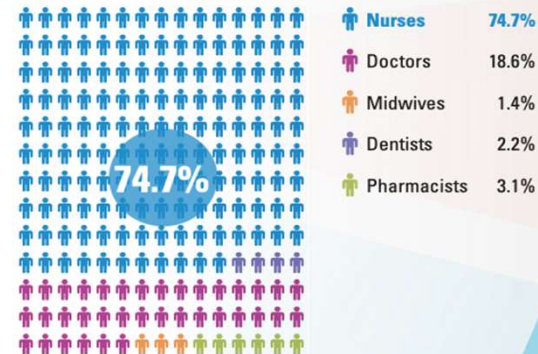
- Chief Nursing Officer position¹ ✗
- Nursing leadership development program¹ ✓
- National association for pre-licensure students¹ ✓

Nursing personnel (latest year) **145602**

Nursing professionals 95572	Nursing associates 50030	Nurses not further defined 0
---------------------------------------	------------------------------------	--

Share of professional nurses 66%	Density 172.2 per 10 000 population	Graduates per year 3358	Minimum duration of training NR
--	--	-----------------------------------	---

Share of nurses within the health workforce



Issues for consideration

Density above threshold, no estimation for shortage.

*As compared to a benchmark density. Details in *State of the world's nursing 2020 report* and *Global Strategy on Human Resources for Health: Workforce 2030*

Source: National Health Workforce Accounts (NHW), 2020 except ¹. Latest available data are displayed. Includes multiple data sources such as the OECD/Eurostat/WHO EURO Joint Data Collection, labour force survey, census data and estimates from WHO for shortages. Stock and density projection by 2030 based on a simple stock and flow model. See full report for further details. NR=Not reported. Data as of 10 March 2020.

New HQ Structure (6 March 2019)



- Departments
- Partnership /hosted entity
- Cross cutting initiatives

